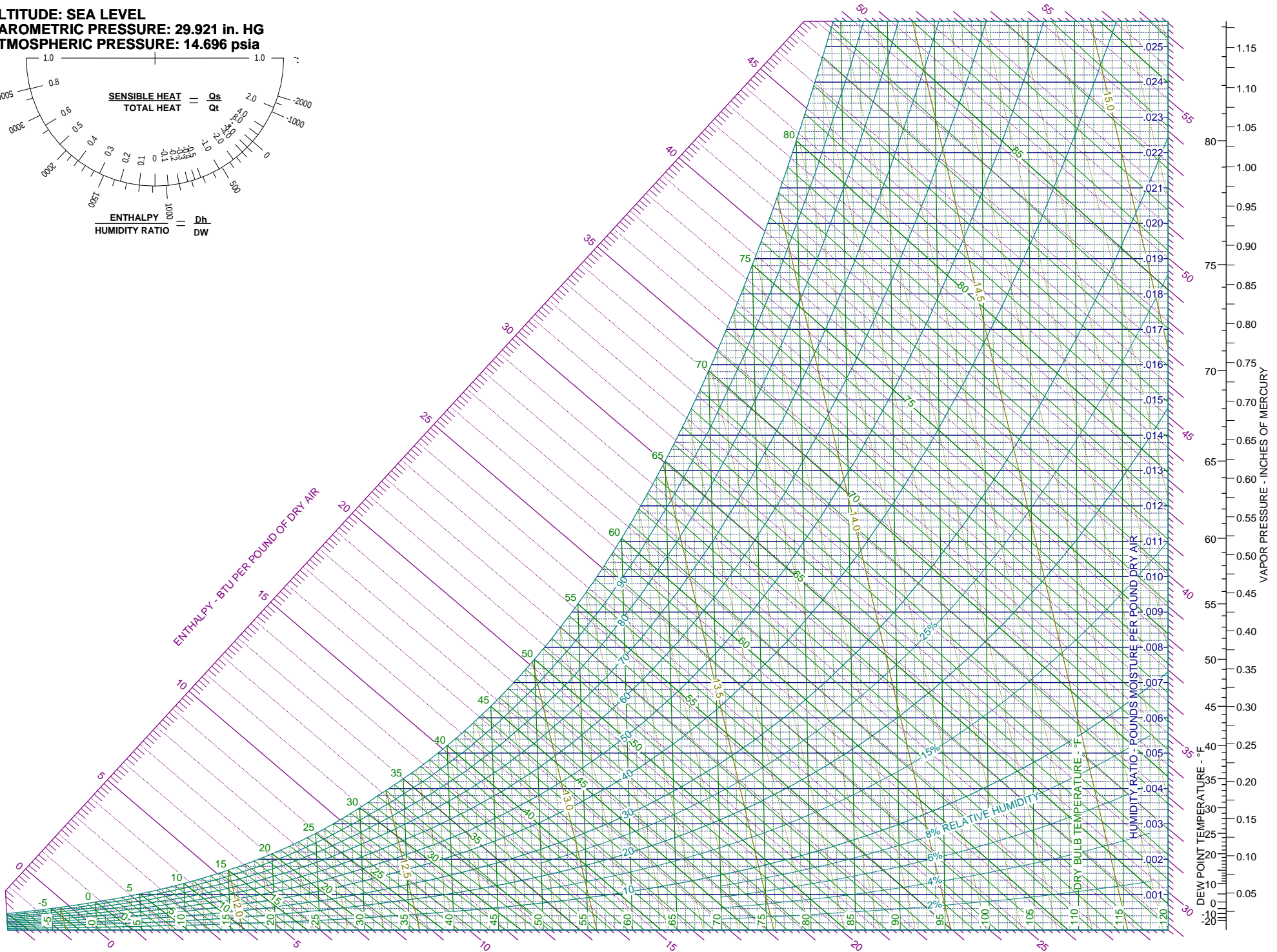
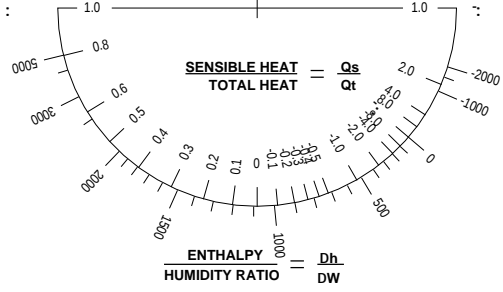


**ALTITUDE: SEA LEVEL**  
**BAROMETRIC PRESSURE: 29.921 in. HG**  
**ATMOSPHERIC PRESSURE: 14.696 psia**



**ALTITUDE: 3 METERS**  
**BAROMETRIC PRESSURE: 101.292 kPa**  
**ATMOSPHERIC PRESSURE: 14.691 psia**

